

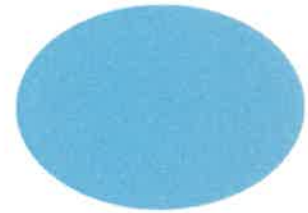
The Green arrows are the direction  
LOAD-IN and LOAD-OUT

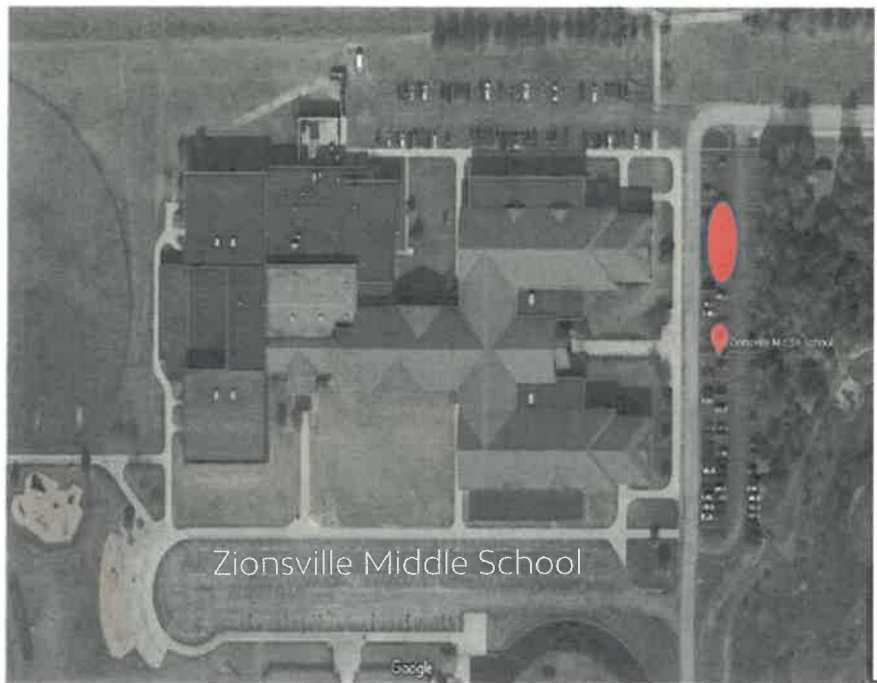


The Red lines indicate where  
barriers will be. We will have  
volunteers at the top of Poplar and  
at the bottom at Hawthorne to let  
people in and out



Check In at Poplar & Main Street





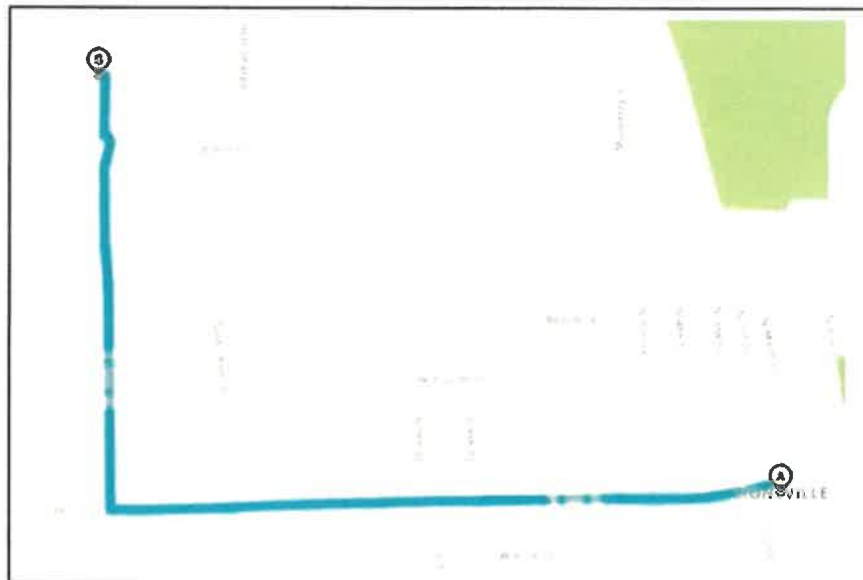
Shuttle Pick Up/Drop Off Locations: 

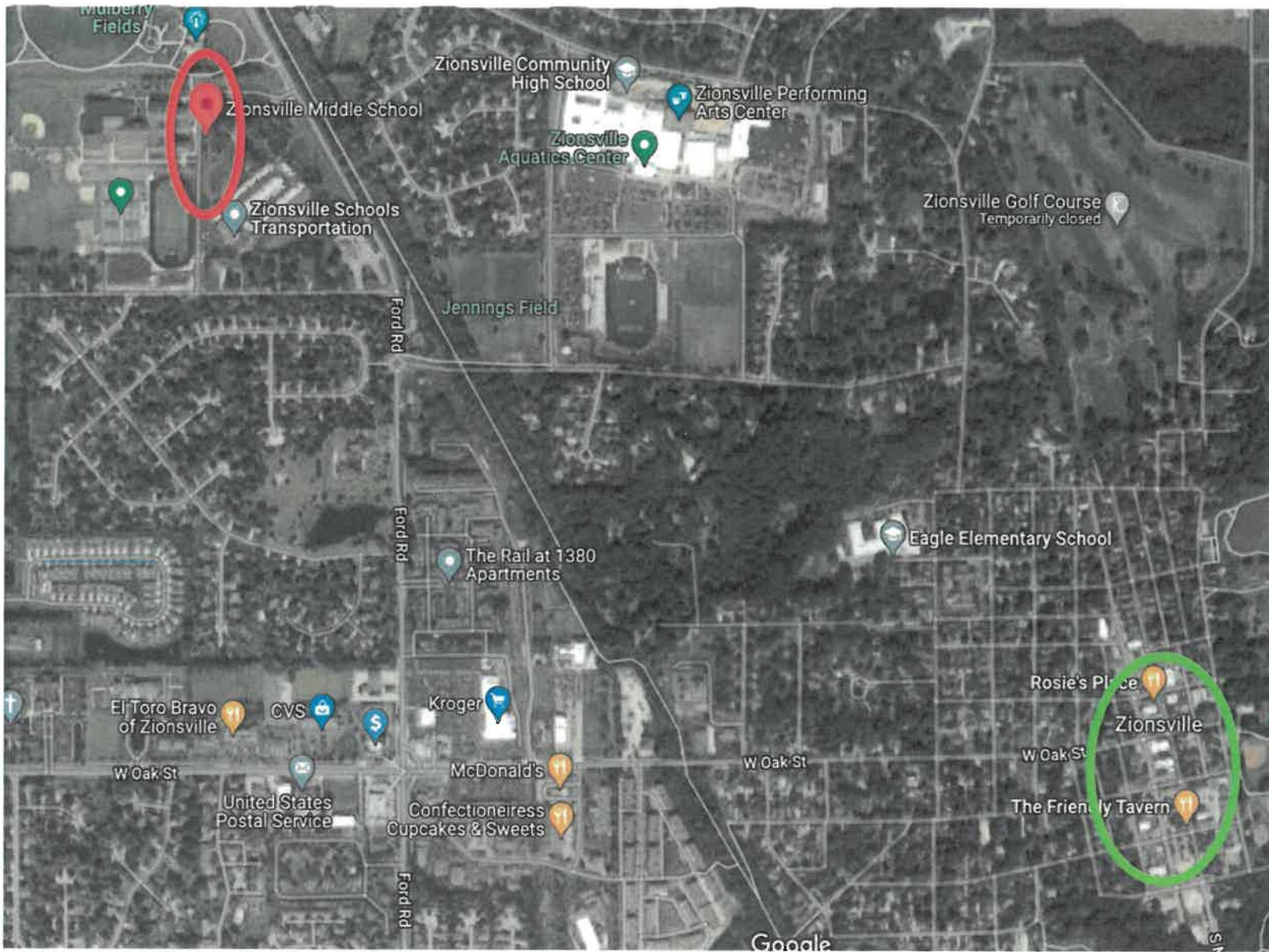
In front of the Zionsville Middle School and the intersection of First Street and Oak Street.

### Vendor Parking

Zionsville Middle School: 900 North Ford Road, Zionsville

From Main Street go West 1 block to First Street.  
At the four-way stop turn West onto Oak Street.  
Take Oak Street all the way to Ford Road, turn North.  
Arrive at Zionsville Middle School.





Hello Everyone,

This map shows the overall picture of where to park in relation to the event. We will have a shuttle that will run in the morning and then again in the evening to help with your cars. At the Zionsville Middle School, I have circled in red the parking lot they have allowed us to park. Please do not park anywhere else at the school. I have circled the event in green. The next page will have pathways we would like you to come into the event. We have the side streets blocked off, so we need everyone to follow the arrows on the map to come in. We will have the paths marked on the map for those coming from the East or West. The same would go for load out.